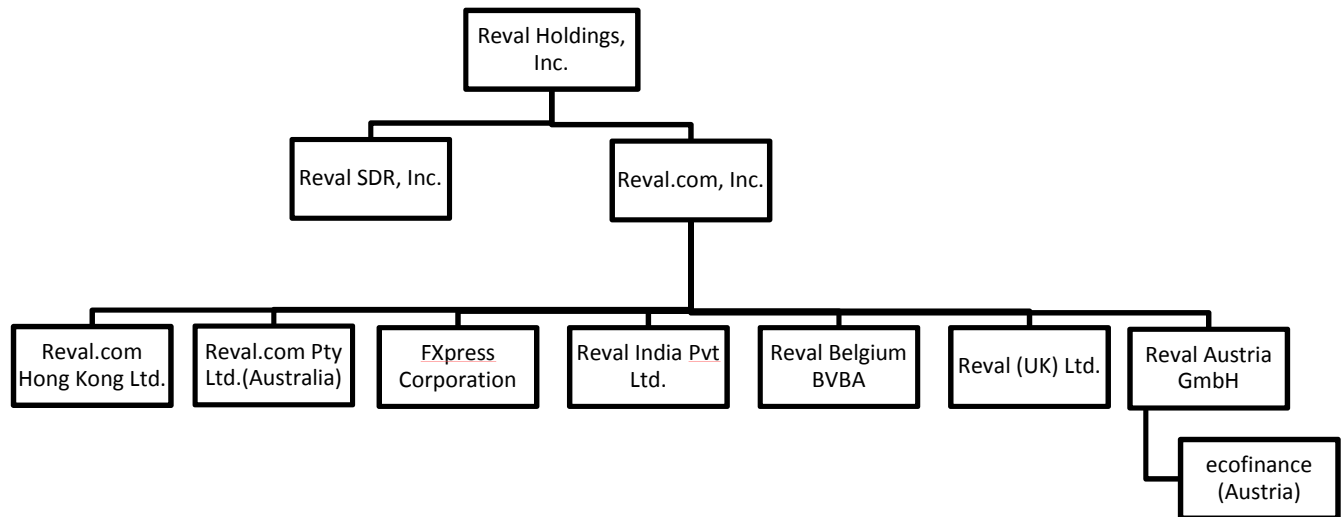


## Exhibit E – Organizational Structure

### Corporate Organizational Structure

The graphic below depicts the organizational structure of Reval SDR, Inc. and its affiliates.



### Jurisdictional Information

Please refer to the attached documents for proof of jurisdictional information regarding any of the entities in the graphic above.

E-1 Reval Certificate	Proof of jurisdiction for Reval.com, Inc.
E-2 Reval.com Hong Kong Certificate of Incorporation	Proof of jurisdiction for Reval.com Hong Kong Ltd.
E-3 Reval.com PTY Limited (Australia)	Proof of jurisdiction for Reval.com Pty Ltd. (Australia)
E-4 FXpress Corporation Certified Articles of Incorporation	Proof of jurisdiction for FXpress Corporation
E-5 Reval India Certificate of Incorporation	Proof of jurisdiction for Reval India Pvt Ltd.
E-6 Reval Belgium BVBA Certified Deed of Incorporation	Proof of jurisdiction for Reval Belgium BVBA
E-7 Reval.com (UK) Ltd. Certificate of Incorporation	Proof of jurisdiction for Reval (UK) Ltd.
E-8 Reval Austria GmbH Declaration of	Proof of jurisdiction for Reval Austria GmbH

Incorporation	
E-9 ecofinance Firmenbuchauszug	Proof of jurisdiction for ecofinance Finanzsoftware & Consulting GmbH (Austria)

For jurisdictional information regarding Reval SDR, Inc., please refer to Exhibit H.

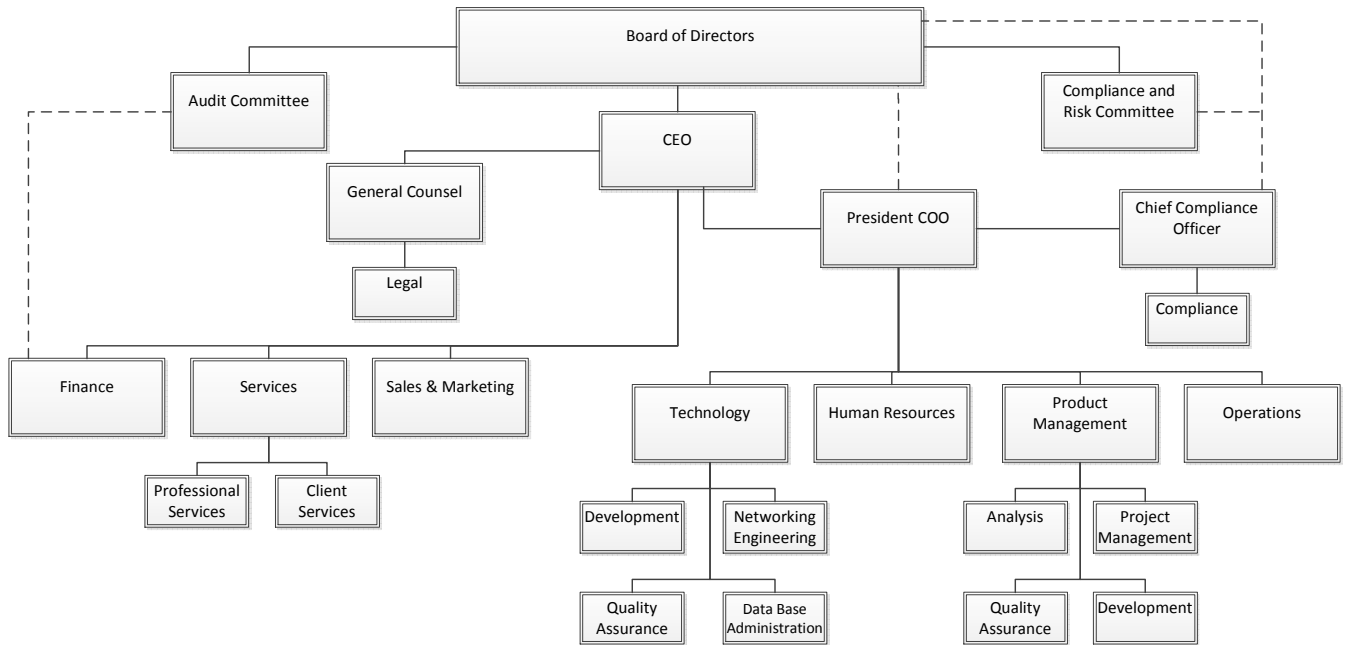
For jurisdictional information regarding Reval Holdings, Inc., please refer to Exhibit A.

For a description of the relationship between Reval Holdings, Inc. and Reval SDR, Inc., please refer to Exhibit G.

The graphic below gives a description of the personnel organization of Reval SDR, Inc.

## Personnel Organizational Structure

## Reval SDR, Inc. Organizational Structure



### Lines of Responsibility

In the above personnel organizational chart, the solid lines represent direct reporting and lines of authority. The dotted lines represent the indirect reporting lines to satisfy governance and independence provisions.