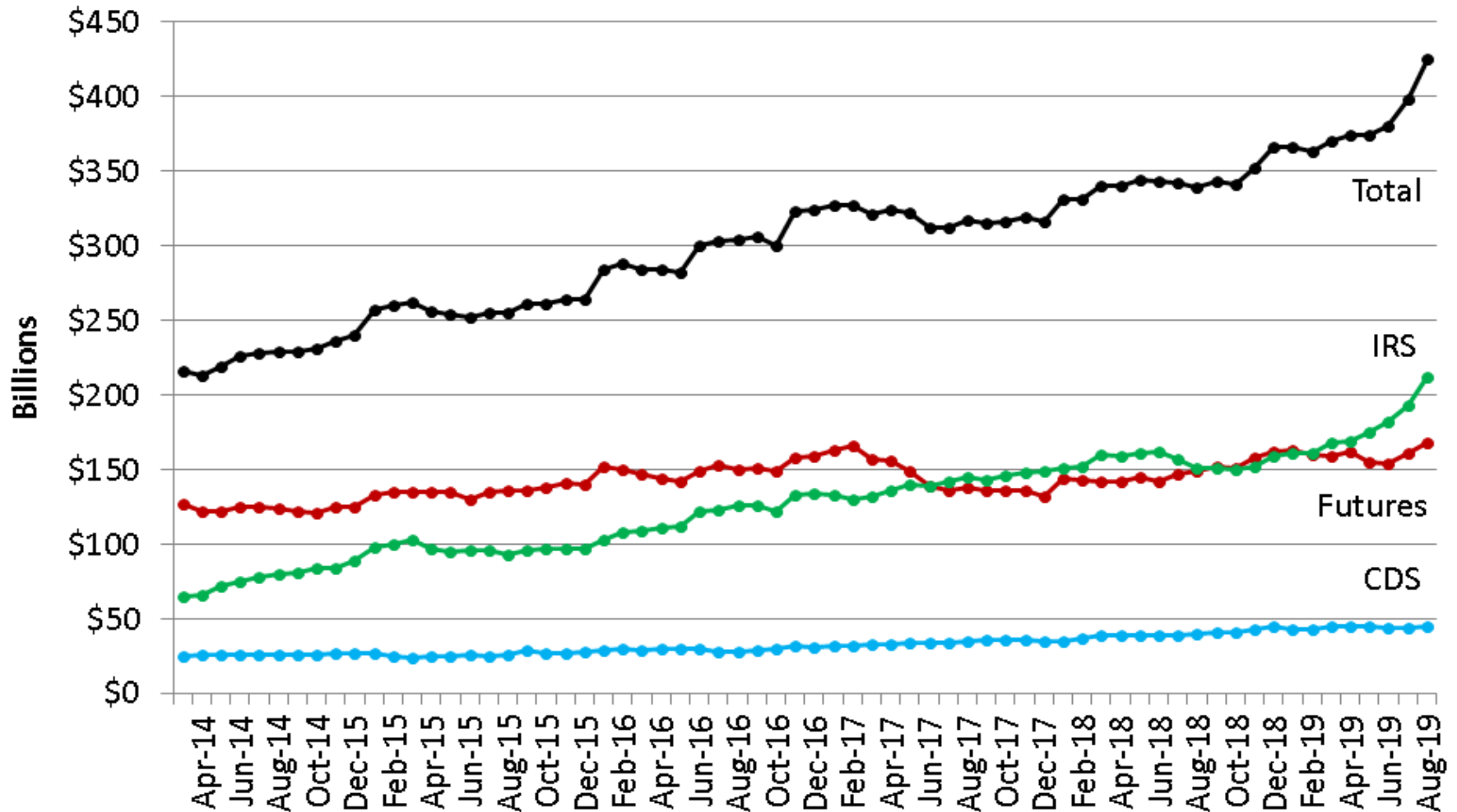


# Initial Margin Requirements\*

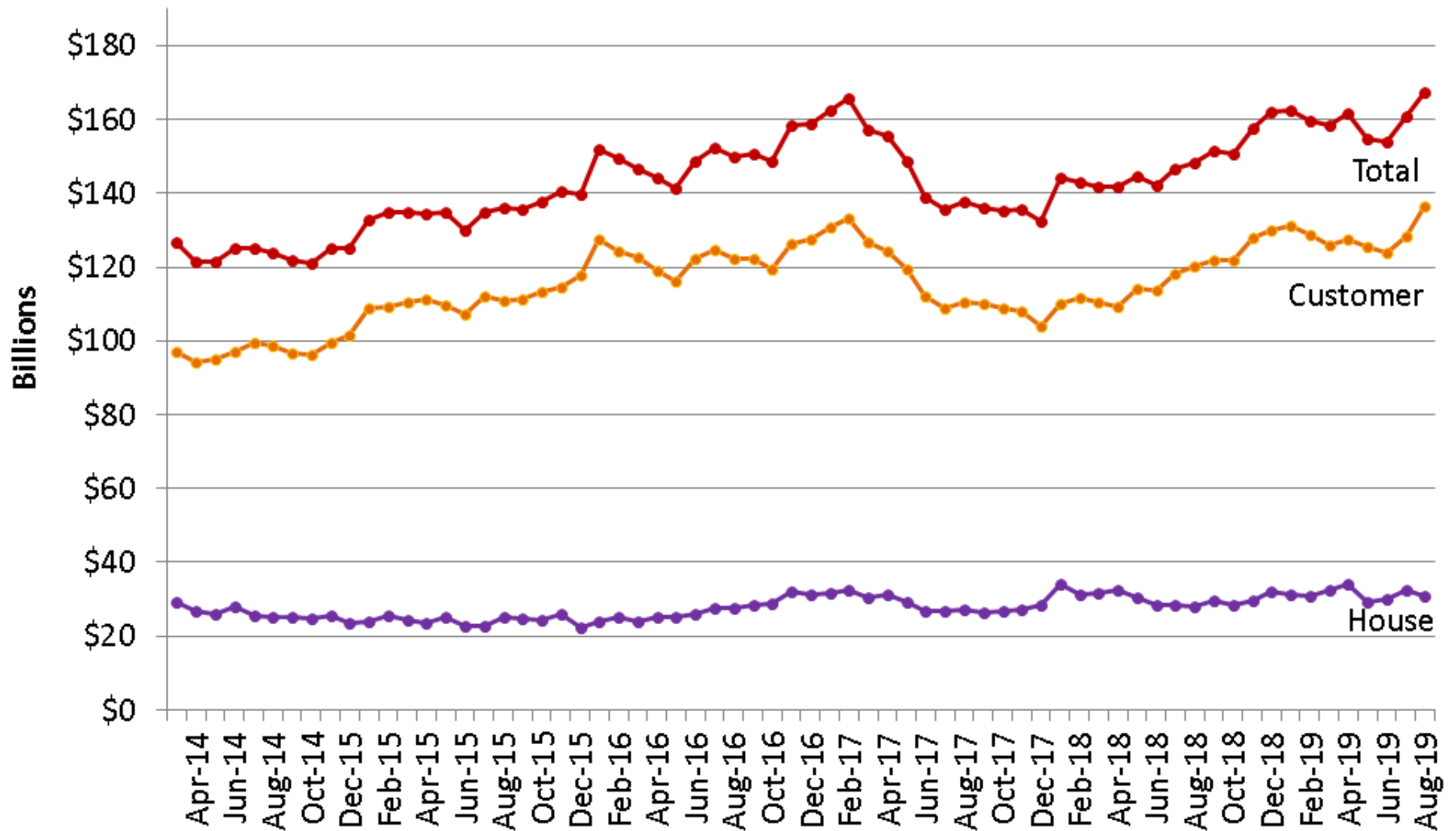
Futures data include CME, ICEU, & ICUS. IRS data include CME & LCH Ltd.  
 CDS data include CME, ICC, ICEU, & LCH SA. All data are month-end.



\*Total requirements held by clearinghouses from clearing members, including add-ons. These include non-FCM data but no excess collateral, so should not be compared to "Financial Data for FCMs" elsewhere on this website.

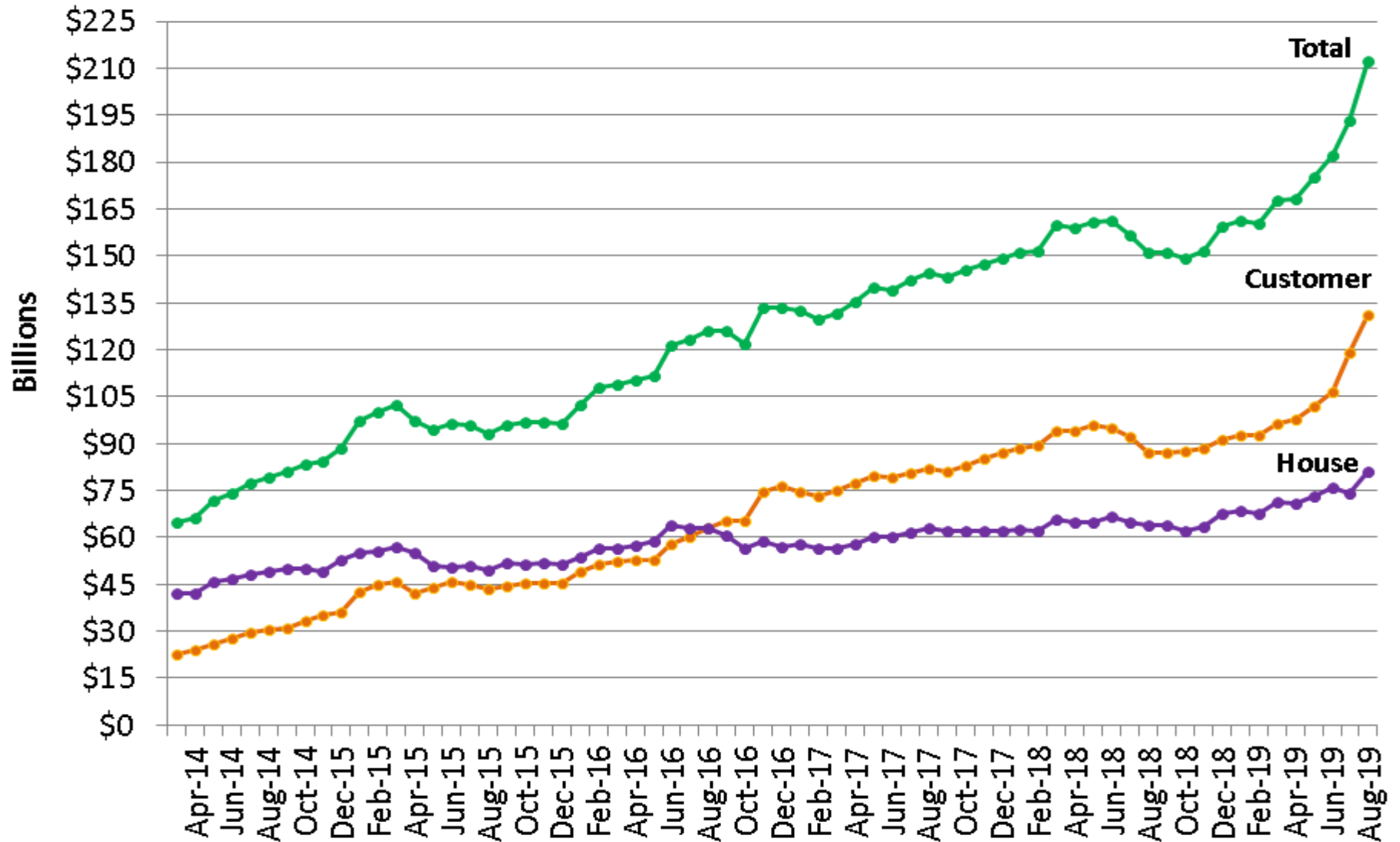
# Initial Margin Requirements - Futures

Month-end data include CME, ICEU, and ICUS



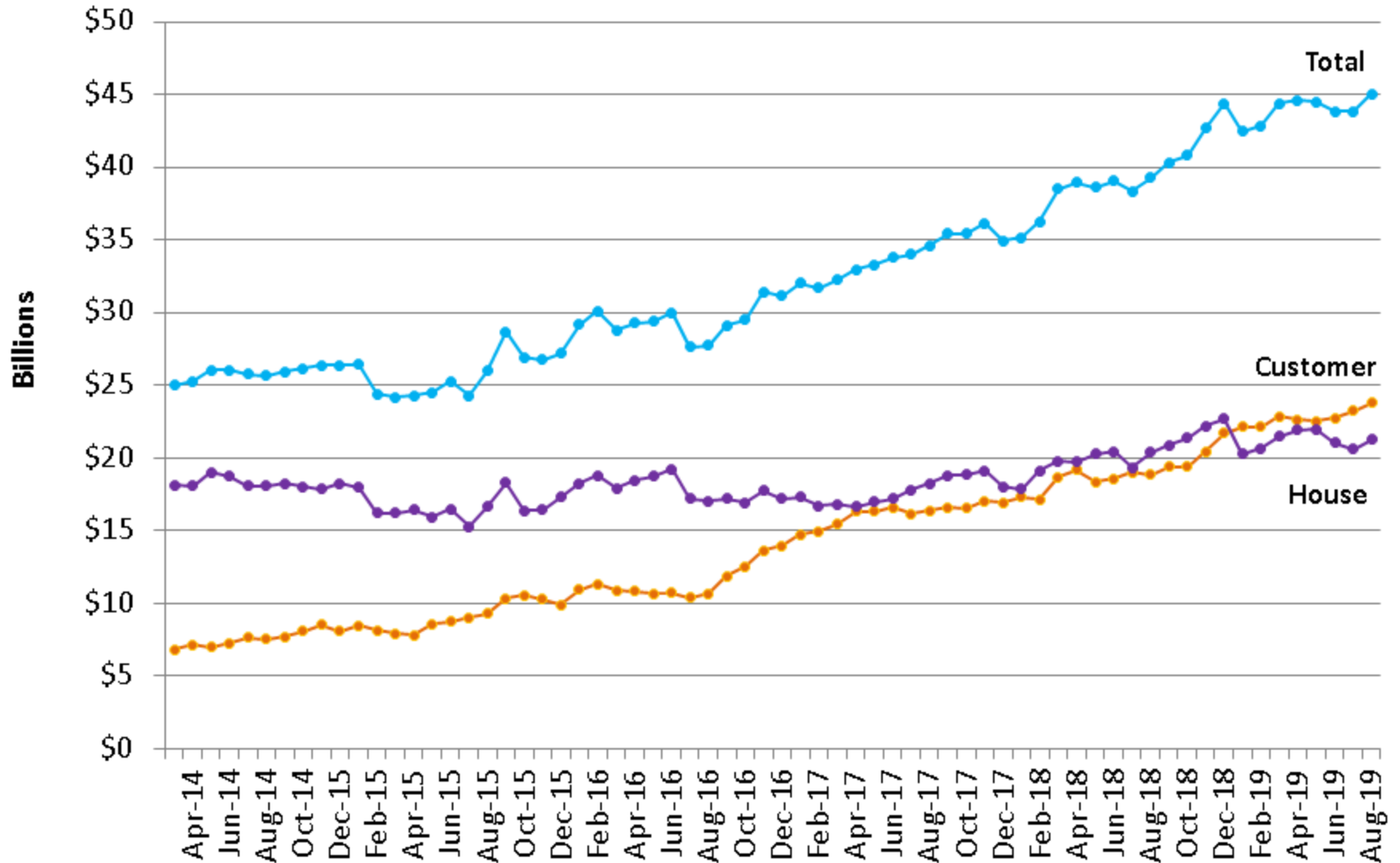
# Initial Margin Requirements - IRS

Month-end data include CME, and LCH Ltd.



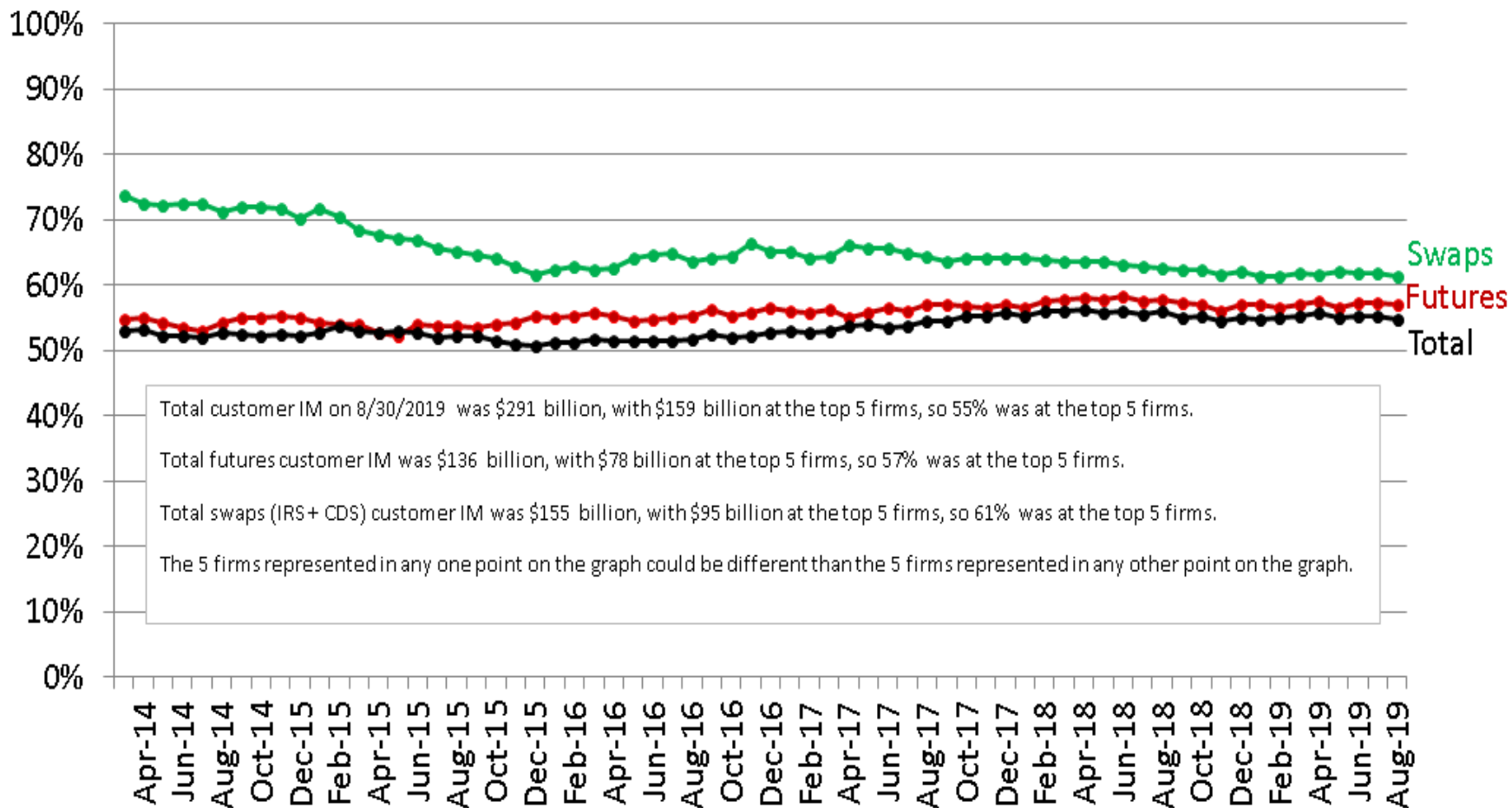
# Initial Margin Requirements - CDS

Month-end data include CME, ICC, ICEU and LCH SA



# Customer Initial Margin Requirements, Percentage at 5 Largest Parent Firms\*

Futures data include CME, ICEU & ICUS. Swaps (IRS + CDS) include CME, ICC, ICEU, LCH Ltd. & LCH SA. All data are month-end.



\*Affiliated clearing members are combined into a single parent firm.